



ADDITIONAL INFORMATION
 MLS #: X13037504
 List Price: \$649,900
 Style: Detached Condo / Bungalow
 Taxes: \$5,683.00 / 2025
 Condo Fees: \$525.00 / Month
 Included In Fees: Common Elements
 Amenities: BBQs Allowed



CONTACT US

Lindsay Reid
BROKER

LINDSAY REID, BROKER
LINDSAY@NADEAUREID.COM | CELL: 519.854.0786

DEVIN NADEAU, BROKER
 DEVIN@NADEAUREID.COM | CELL: 519.476.2071

Info presented herein deemed to be correct but not proven, for marketing purposes only. Info and dimensions (approx) should be verified. View Royal LePage trademarks and notices at rlp.ca/notices.



ROYAL LEPAGE
TRILAND REALTY
 BROKERAGE
 INDEPENDENTLY OWNED AND OPERATED

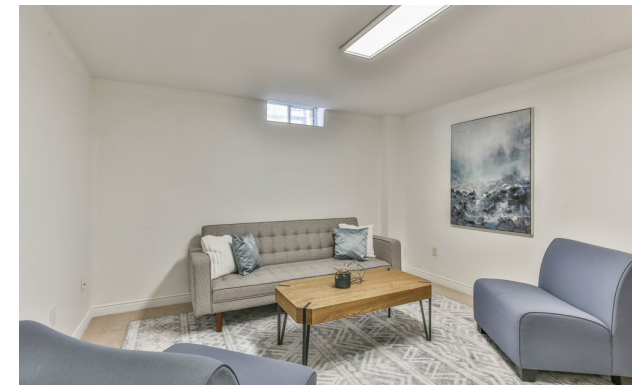
OFFICE: 519.672.9880
 #103-240 WATERLOO STREET
 LONDON, ONTARIO



#8 - 60 ROSECLIFFE CRESCENT LONDON, ONTARIO

This impressive detached bungalow in the sought-after Rosecliffe community offers an abundance of well-designed living space inside and out. Step into the bright main level spanning over 2,000 sq ft, where a formal dining area overlooks a sunken living room complete with a gas fireplace and large bay window. The eat-in kitchen features a functional peninsula with extra storage, skylights that flood the space with natural light, and direct access to a private courtyard. The spacious primary retreat includes vaulted ceilings, multiple closets, a built-in vanity, and a 5-piece ensuite. Both the primary bedroom and living room also offer direct access to an additional private patio-an ideal spot to enjoy your

morning coffee or ease into the day. A second bedroom with its own ensuite, along with a 2-piece powder room and main floor laundry, adds everyday convenience. Downstairs, the finished lower level expands your living space by approximately 1,700 sq ft, offering multiple family and recreation areas, a generous third bedroom, updated 3-piece bath, and plenty of storage and utility space. Outdoor living is just as inviting, with three separate courtyards accessible from within the home-perfect for relaxing or entertaining. This well-cared-for property also benefits from condo-managed lawn maintenance and snow removal, including the driveway, making for easy, low-maintenance living.



Condo Bungalow

Above Grade (approx.)
Interior: 1,705.53 sq ft
Exterior: 1,873.38 sq ft

2+1 Bedrooms

2+2 Bathrooms

South London Westmount

\$649,900

Approx Year Built: 1988

2 Garage Spaces
2 Driveway Spaces

